

Medical Services Administration
Bureau of Medicaid Program Operations and Quality Assurance

MEDICAID BLOOD LEAD TESTING



August 2007

Produced by Data Analysis & Quality Assurance Section
John Spitzley, Manager

Blood Lead Testing Methodology

- **Children must have been eligible for one of the following programs in August 2007**
 - Medicaid Managed Care (MC)
 - enrolled in a Medicaid Health Plan (MHP)
 - Medicaid Fee-for-Service (FFS)
 - enrolled for Medicaid Only FFS coverage
 - Medicaid and CSHCS Dual Eligible (Duals)
 - dually eligible for both Medicaid and CSHCS
- **Blood Lead testing results include children tested:**
 - on or before indicated birthday for 2 and 3 year olds
 - at any time between ages 1 to 6
- **Unique Client Identifier (UCI) used to establish link between Medicaid and lead databases.**

Questions should be directed to Lori Tarpoff at (517) 241-0258, or tarpoffl@michigan.gov

Blood Lead Testing Summary

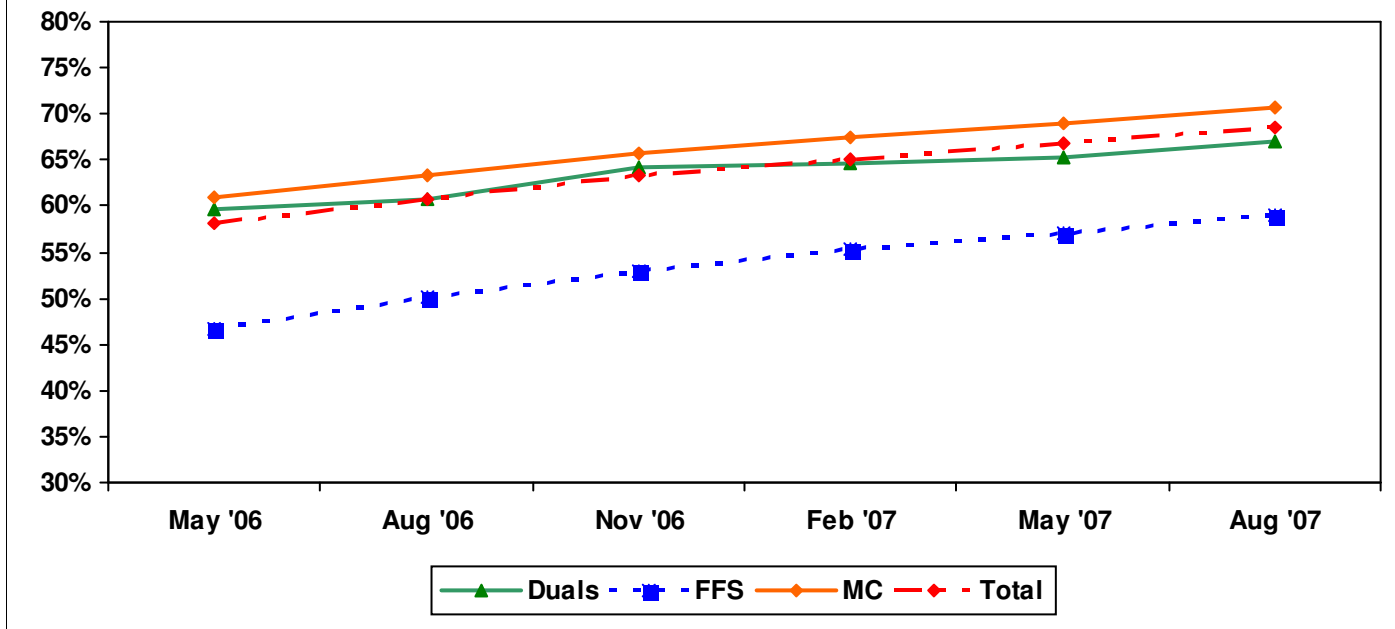
- **2 year old children tested on or before their 2nd birthday**

- 61% Statewide
- 68% City of Detroit
- 63% Statewide for Medicaid MC
- 53% Statewide for Medicaid Only FFS Eligibles
- 62% Statewide for CSHCS Duals

- **3 year old children tested on or before their 3rd birthday**

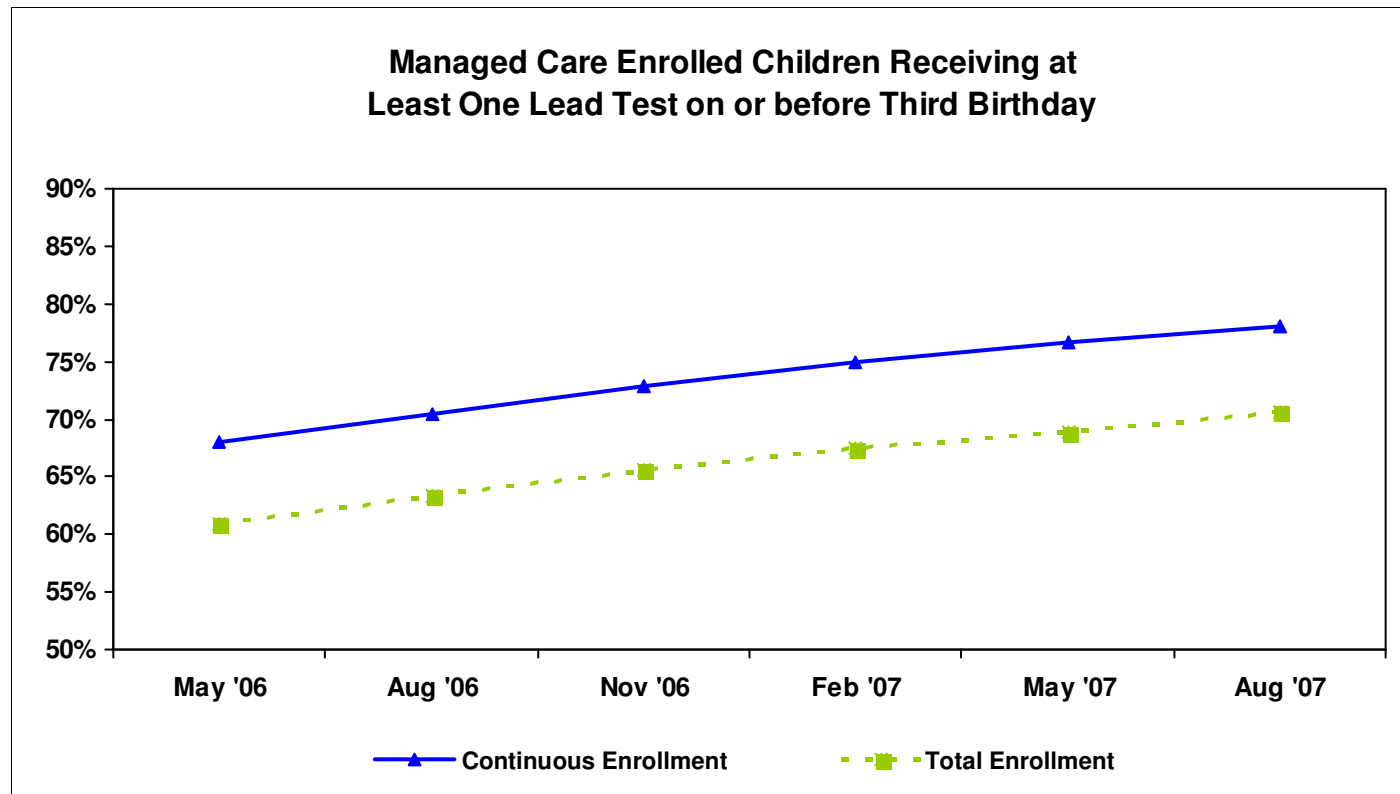
- 68% Statewide
- 79% City of Detroit
- 71% Statewide for Medicaid MC
 - 78% Statewide for Medicaid MC with 12-Month Continuous Enrollment
- 59% Statewide for Medicaid Only FFS Eligibles
- 67% Statewide for CSHCS Duals

Children Receiving at Least One Blood Lead Test on or before Third Birthday by Program Eligibility



August 2007

Managed Care Enrolled Children Receiving at Least One Lead Test on or before Third Birthday



Total Enrollment

- Enrolled in measurement month

Continuous Enrollment

- Based on MMIS eligibility system

- Enrolled in same health plan for the measurement month and 12 months preceding 3rd birthday, with a 1-month allowable gap.

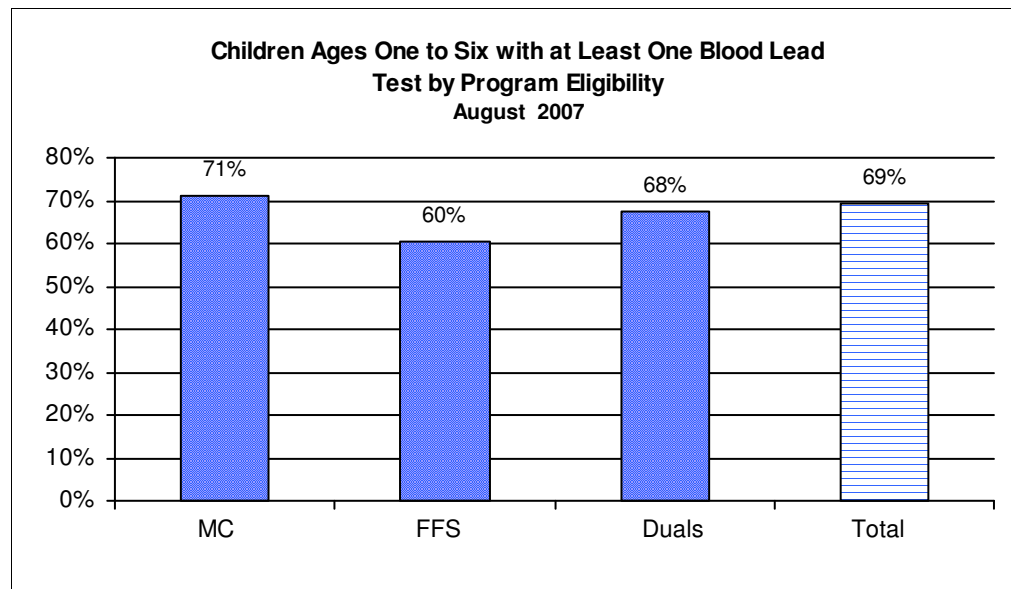
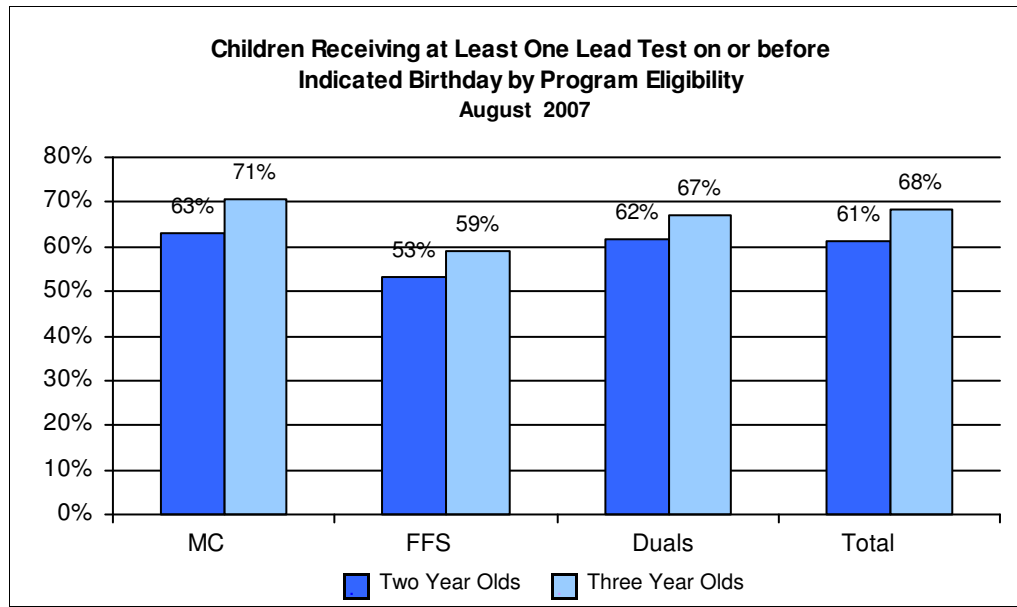


Table 1. Percent of Children with at Least One Blood Lead Test on or before their Second Birthday

Program	Aug-06	Sep-06	Oct-06	Nov-06	Dec-06	Jan-07	Feb-07	Mar-07	Apr-07	May-07	Jun-07	Jul-07	Aug-07
MC	57.2%	58.0%	58.5%	59.4%	60.0%	60.5%	60.8%	61.2%	61.4%	61.9%	62.2%	62.7%	63.2%
FFS	45.8%	46.4%	46.5%	47.6%	48.4%	49.3%	50.2%	50.5%	51.2%	52.0%	52.9%	52.7%	53.1%
Duals	57.8%	59.1%	59.1%	59.5%	59.8%	59.0%	59.6%	59.5%	59.8%	60.1%	61.4%	61.1%	61.8%
Total	55.1%	55.8%	56.3%	57.2%	57.9%	58.4%	58.8%	59.2%	59.6%	60.2%	60.7%	60.9%	61.4%

Table 2. Percent of Children with at Least One Blood Lead Test on or before their Third Birthday

Program	Aug-06	Sep-06	Oct-06	Nov-06	Dec-06	Jan-07	Feb-07	Mar-07	Apr-07	May-07	Jun-07	Jul-07	Aug-07
MC	63.4%	64.3%	65.1%	65.7%	66.2%	66.7%	67.5%	68.1%	68.4%	68.9%	69.5%	69.9%	70.6%
FFS	50.0%	51.2%	52.0%	53.0%	53.8%	54.8%	55.2%	54.6%	55.9%	57.0%	57.5%	58.5%	59.1%
Duals	60.7%	62.3%	63.6%	64.1%	64.3%	64.3%	64.7%	64.9%	64.8%	65.3%	65.2%	66.4%	67.0%
Total	60.8%	61.7%	62.5%	63.2%	63.9%	64.4%	65.1%	65.5%	66.2%	66.7%	67.3%	67.8%	68.4%

Table 3. Percent of Children Ages One to Six with at Least One Blood Lead Test

Program	Aug-06	Sep-06	Oct-06	Nov-06	Dec-06	Jan-07	Feb-07	Mar-07	Apr-07	May-07	Jun-07	Jul-07	Aug-07
MC	66.3%	67.4%	68.0%	68.5%	69.1%	69.3%	69.0%	69.8%	69.8%	70.2%	70.3%	71.2%	71.4%
FFS	53.3%	54.1%	55.0%	56.2%	56.8%	57.3%	57.1%	57.5%	58.2%	59.2%	59.4%	59.9%	60.3%
Duals	62.7%	63.9%	64.3%	65.0%	65.4%	65.4%	65.3%	66.0%	66.4%	66.8%	66.8%	67.6%	67.7%
Total	63.8%	64.7%	65.5%	66.2%	66.8%	67.0%	66.8%	67.4%	67.7%	68.2%	68.4%	69.1%	69.3%

**Table 4. Statewide Blood Lead Testing of Two and Three Year Old Children for All Programs
August 2007**

County	2 Years of Age			3 Years of Age		
	Eligibles	Eligibles with at least 1 test on or before their 2nd birthday	Percent of Eligibles with at least 1 test on or before their 2nd birthday	Eligibles	Eligibles with at least 1 test on or before their 3rd birthday	Percent of Eligibles with at least 1 test on or before their 3rd birthday
ALCONA	37	24	65%	32	22	69%
ALGER	39	30	77%	29	26	90%
ALLEGAN	621	381	61%	571	378	66%
ALPENA	159	108	68%	145	111	77%
ANTRIM	133	90	68%	123	86	70%
ARENAC	98	54	55%	90	47	52%
BARAGA	57	38	67%	34	27	79%
BARRY	285	212	74%	260	197	76%
BAY	565	387	68%	582	421	72%
BENZIE	86	49	57%	94	55	59%
BERRIEN	1,055	684	65%	1,000	725	73%
BRANCH	269	97	36%	257	138	54%
CALHOUN	976	694	71%	912	674	74%
CASS	260	149	57%	282	169	60%
CHARLEVOIX	103	59	57%	113	73	65%
CHEBOYGAN	166	97	58%	146	84	58%
CHIPPEWA	180	115	64%	187	142	76%
CLARE	218	90	41%	177	87	49%
CLINTON	185	103	56%	206	124	60%
CRAWFORD	60	34	57%	79	37	47%
DELTA	169	134	79%	189	161	85%
DICKINSON	126	79	63%	138	67	49%
EATON	443	298	67%	433	314	73%
EMMET	172	109	63%	179	115	64%
GENESEE	2,866	1,785	62%	2,833	2,021	71%
GLADWIN	110	34	31%	113	40	35%
GOGEBIC	69	45	65%	78	51	65%
GRAND TRAVERSE	368	93	25%	371	85	23%
GRATIOT	246	144	59%	239	144	60%
HILLSDALE	269	124	46%	283	177	63%
HOUGHTON	177	109	62%	179	129	72%
HURON	153	85	56%	157	107	68%
INGHAM	1,467	880	60%	1,401	930	66%
IONIA	347	192	55%	319	187	59%
IOSCO	130	62	48%	132	68	52%
IRON	65	27	42%	45	24	53%
ISABELLA	292	90	31%	277	101	36%
JACKSON	966	681	70%	904	649	72%
KALAMAZOO	1,283	795	62%	1,216	864	71%
KALKASKA	124	66	53%	115	43	37%
KENT	3,768	2,931	78%	3,521	2,903	82%
KEWEENAW	5	4	80%	6	2	33%

County	2 Years of Age			3 Years of Age		
	Eligibles	Eligibles with at least 1 test on or before their 2nd birthday	Percent of Eligibles with at least 1 test on or before their 2nd birthday	Eligibles	Eligibles with at least 1 test on or before their 3rd birthday	Percent of Eligibles with at least 1 test on or before their 3rd birthday
LAKE	61	38	62%	61	47	77%
LAPEER	378	188	50%	396	238	60%
LEELANAU	53	28	53%	45	22	49%
LENAWEE	501	277	55%	472	285	60%
LIVINGSTON	379	187	49%	351	184	52%
LUCE	39	33	85%	38	32	84%
MACKINAC	47	36	77%	42	36	86%
MACOMB	2,940	1,353	46%	2,844	1,551	55%
MANISTEE	115	75	65%	118	85	72%
MARQUETTE	249	175	70%	237	186	78%
MASON	158	99	63%	166	105	63%
MECOSTA	204	145	71%	214	155	72%
MENOMINEE	91	65	71%	104	81	78%
MIDLAND	318	99	31%	353	159	45%
MISSAUKEE	71	41	58%	73	24	33%
MONROE	521	270	52%	532	307	58%
MONTCALM	388	220	57%	370	237	64%
MONTMORENCY	40	16	40%	45	28	62%
MUSKEGON	1,237	900	73%	1,209	942	78%
NEWAYGO	305	216	71%	271	202	75%
OAKLAND	3,180	1,758	55%	2,961	1,869	63%
OCEANA	213	146	69%	256	197	77%
OGEMAW	139	68	49%	141	73	52%
ONTONAGON	32	24	75%	21	15	71%
OSCEOLA	121	53	44%	122	74	61%
OSCODA	48	16	33%	55	27	49%
OTSEGO	148	66	45%	143	87	61%
OTTAWA	909	502	55%	883	507	57%
PRESQUE ISLE	52	23	44%	57	40	70%
ROSCOMMON	149	48	32%	122	37	30%
SAGINAW	1,263	902	71%	1,301	1,040	80%
ST CLAIR	775	378	49%	839	512	61%
ST JOSEPH	456	266	58%	468	311	66%
SANILAC	230	168	73%	282	208	74%
SCHOOLCRAFT	44	36	82%	46	44	96%
SHIAWASSEE	376	272	72%	365	265	73%
TUSCOLA	314	230	73%	297	209	70%
VAN BUREN	506	277	55%	550	351	64%
WASHTENAW	959	502	52%	916	540	59%
DETROIT, CITY OF	9,272	6,293	68%	9,094	7,186	79%
WAYNE, ex Detroit	4,350	2,461	57%	4,195	2,642	63%
WEXFORD	260	141	54%	223	88	39%
MICHIGAN	51,058	31,353	61%	49,725	34,033	68%

**Table 5. Statewide Blood Lead Testing of Two and Three Year Old Children Enrolled in Managed Care
August 2007**

County	2 Years of Age			3 Years of Age		
	Eligibles	Eligibles with at least 1 test on or before their 2nd birthday	Percent of Eligibles with at least 1 test on or before their 2nd birthday	Eligibles	Eligibles with at least 1 test on or before their 3rd birthday	Percent of Eligibles with at least 1 test on or before their 3rd birthday
ALCONA	29	21	72%	26	17	65%
ALGER	28	21	75%	22	20	91%
ALLEGAN	484	322	67%	429	298	69%
ALPENA	95	67	71%	76	58	76%
ANTRIM	49	28	57%	54	40	74%
ARENAC	81	45	56%	72	36	50%
BARAGA	32	20	63%	21	16	76%
BARRY	156	119	76%	131	106	81%
BAY	477	332	70%	477	359	75%
BENZIE	62	32	52%	68	42	62%
BERRIEN	872	577	66%	806	606	75%
BRANCH	209	84	40%	211	115	55%
CALHOUN	814	580	71%	773	585	76%
CASS	210	125	60%	228	145	64%
CHARLEVOIX	45	28	62%	55	36	65%
CHEBOYGAN	0	0	NA	0	0	NA
CHIPPEWA	104	63	61%	98	70	71%
CLARE	4	2	50%	3	3	100%
CLINTON	149	84	56%	160	100	63%
CRAWFORD	43	25	58%	65	28	43%
DELTA	140	111	79%	148	128	86%
DICKINSON	97	60	62%	100	42	42%
EATON	367	248	68%	343	254	74%
EMMET	6	5	83%	1	0	0%
GENESEE	2,477	1,578	64%	2,449	1,772	72%
GLADWIN	84	24	29%	83	31	37%
GOGEBIC	52	36	69%	64	41	64%
GRAND TRAVERSE	133	38	29%	127	32	25%
GRATIOT	195	119	61%	192	117	61%
HILLSDALE	217	98	45%	241	145	60%
HOUGHTON	144	88	61%	143	105	73%
HURON	122	75	61%	112	83	74%
INGHAM	1,241	744	60%	1,157	794	69%
IONIA	277	155	56%	251	146	58%
IOSCO	111	50	45%	103	57	55%
IRON	58	23	40%	35	20	57%
ISABELLA	212	69	33%	215	77	36%
JACKSON	800	595	74%	738	544	74%
KALAMAZOO	1,090	696	64%	1,012	728	72%
KALKASKA	9	5	56%	11	4	36%
KENT	3,098	2,477	80%	2,846	2,395	84%
KEWEENAW	5	4	80%	5	2	40%

County	2 Years of Age			3 Years of Age		
	Eligibles	Eligibles with at least 1 test on or before their 2nd birthday	Percent of Eligibles with at least 1 test on or before their 2nd birthday	Eligibles	Eligibles with at least 1 test on or before their 3rd birthday	Percent of Eligibles with at least 1 test on or before their 3rd birthday
LAKE	53	31	58%	45	39	87%
LAPEER	297	155	52%	310	200	65%
LEELANAU	23	11	48%	17	10	59%
LENAWEE	387	230	59%	383	243	63%
LIVINGSTON	299	159	53%	278	152	55%
LUCE	28	23	82%	27	21	78%
MACKINAC	25	17	68%	25	21	84%
MACOMB	2,489	1,175	47%	2,409	1,358	56%
MANISTEE	78	62	79%	83	65	78%
MARQUETTE	196	138	70%	192	150	78%
MASON	7	4	57%	7	1	14%
MECOSTA	157	107	68%	160	125	78%
MENOMINEE	64	46	72%	71	57	80%
MIDLAND	13	6	46%	10	2	20%
MISSAUKEE	47	30	64%	59	25	36%
MONROE	421	229	54%	417	251	61%
MONTCALM	316	184	58%	299	198	66%
MONTMORENCY	33	14	42%	35	21	60%
MUSKEGON	1,018	763	75%	987	778	79%
NEWAYGO	253	183	72%	212	166	78%
OAKLAND	2,685	1,508	56%	2,494	1,629	65%
OCEANA	160	117	73%	181	146	81%
OGEMAW	112	58	52%	119	60	50%
ONTONAGON	23	16	70%	16	11	69%
OSCEOLA	97	45	46%	94	57	61%
OSCODA	40	12	30%	50	25	50%
OTSEGO	71	36	51%	77	50	65%
OTTAWA	675	402	60%	640	391	61%
PRESQUE ISLE	42	18	43%	43	31	72%
ROSCOMMON	125	41	33%	101	34	34%
SAGINAW	1,063	777	73%	1,092	895	82%
ST CLAIR	631	313	50%	665	413	62%
ST JOSEPH	382	227	59%	374	252	67%
SANILAC	181	137	76%	226	166	73%
SCHOOLCRAFT	35	28	80%	35	33	94%
SHIAWASSEE	302	232	77%	289	221	76%
TUSCOLA	238	173	73%	221	159	72%
VAN BUREN	375	222	59%	418	278	67%
WASHTENAW	788	431	55%	751	459	61%
DETROIT, CITY OF	8,094	5,510	68%	7,957	6,316	79%
WAYNE, ex Detroit	3,710	2,128	57%	3,574	2,279	64%
WEXFORD	102	54	53%	87	33	38%
MICHIGAN	41,013	25,925	63%	39,681	28,018	71%

**Table 6. Statewide Blood Lead Testing of Two and Three Year Old Children Eligible for Medicaid Only Fee-for-Service Coverage
August 2007**

County	2 Years of Age			3 Years of Age		
	Eligibles	Eligibles with at least 1 test on or before their 2nd birthday	Percent of Eligibles with at least 1 test on or before their 2nd birthday	Eligibles	Eligibles with at least 1 test on or before their 3rd birthday	Percent of Eligibles with at least 1 test on or before their 3rd birthday
ALCONA	7	3	43%	4	3	75%
ALGER	10	8	80%	7	6	86%
ALLEGAN	126	53	42%	125	74	59%
ALPENA	62	40	65%	62	47	76%
ANTRIM	84	62	74%	68	45	66%
ARENAC	12	6	50%	14	8	57%
BARAGA	25	18	72%	12	10	83%
BARRY	123	87	71%	123	85	69%
BAY	77	47	61%	95	54	57%
BENZIE	23	17	74%	21	10	48%
BERRIEN	169	98	58%	171	101	59%
BRANCH	57	13	23%	40	19	48%
CALHOUN	142	99	70%	124	79	64%
CASS	41	19	46%	47	21	45%
CHARLEVOIX	52	28	54%	53	35	66%
CHEBOYGAN	162	95	59%	144	83	58%
CHIPPEWA	74	50	68%	85	68	80%
CLARE	213	87	41%	171	83	49%
CLINTON	29	15	52%	45	23	51%
CRAWFORD	16	8	50%	14	9	64%
DELTA	27	21	78%	36	30	83%
DICKINSON	26	17	65%	36	23	64%
EATON	67	43	64%	80	50	63%
EMMET	159	98	62%	172	111	65%
GENESEE	331	174	53%	345	218	63%
GLADWIN	19	8	42%	28	9	32%
GOGEBIC	14	6	43%	14	10	71%
GRAND TRAVERSE	231	53	23%	236	53	22%
GRATIOT	47	22	47%	40	24	60%
HILLSDALE	45	23	51%	32	25	78%
HOUGHTON	32	20	63%	35	23	66%
HURON	29	10	34%	39	22	56%
INGHAM	192	109	57%	210	118	56%
IONIA	67	36	54%	64	38	59%
IOSCO	18	11	61%	27	10	37%
IRON	7	4	57%	10	4	40%
ISABELLA	70	18	26%	51	18	35%
JACKSON	132	67	51%	140	89	64%
KALAMAZOO	154	76	49%	167	110	66%
KALKASKA	114	61	54%	100	37	37%
KENT	594	401	68%	607	452	74%
KEWEENAW	0	0	NA	1	0	0%

County	2 Years of Age			3 Years of Age		
	Eligibles	Eligibles with at least 1 test on or before their 2nd birthday	Percent of Eligibles with at least 1 test on or before their 2nd birthday	Eligibles	Eligibles with at least 1 test on or before their 3rd birthday	Percent of Eligibles with at least 1 test on or before their 3rd birthday
LAKE	7	6	86%	14	7	50%
LAPEER	71	28	39%	78	34	44%
LEELANAU	30	17	57%	28	12	43%
LENAWEE	102	44	43%	81	35	43%
LIVINGSTON	72	25	35%	64	27	42%
LUCE	11	10	91%	11	11	100%
MACKINAC	19	17	89%	16	14	88%
MACOMB	392	148	38%	386	172	45%
MANISTEE	36	12	33%	33	19	58%
MARQUETTE	44	33	75%	41	33	80%
MASON	148	93	63%	158	103	65%
MECOSTA	39	31	79%	49	26	53%
MENOMINEE	25	17	68%	30	21	70%
MIDLAND	295	88	30%	330	151	46%
MISSAUKEE	24	11	46%	13	3	23%
MONROE	88	35	40%	99	45	45%
MONTCALM	67	33	49%	58	30	52%
MONTMORENCY	5	1	20%	8	6	75%
MUSKEGON	188	117	62%	197	143	73%
NEWAYGO	46	29	63%	53	31	58%
OAKLAND	440	221	50%	416	205	49%
OCEANA	49	27	55%	72	48	67%
OGEMAW	25	9	36%	20	12	60%
ONTONAGON	8	7	88%	4	3	75%
OSCEOLA	19	7	37%	21	15	71%
OSCODA	6	3	50%	4	2	50%
OTSEGO	76	30	39%	57	31	54%
OTTAWA	214	89	42%	223	108	48%
PRESQUE ISLE	9	5	56%	10	6	60%
ROSCOMMON	19	6	32%	18	3	17%
SAGINAW	172	102	59%	177	121	68%
ST CLAIR	127	57	45%	147	85	58%
ST JOSEPH	64	34	53%	85	57	67%
SANILAC	43	26	60%	49	36	73%
SCHOOLCRAFT	8	8	100%	9	9	100%
SHIAWASSEE	66	34	52%	69	40	58%
TUSCOLA	62	46	74%	67	43	64%
VAN BUREN	119	48	40%	117	63	54%
WASHTENAW	149	63	42%	141	72	51%
DETROIT, CITY OF	975	637	65%	985	740	75%
WAYNE, ex Detroit	548	276	50%	537	303	56%
WEXFORD	150	82	55%	130	53	41%
MICHIGAN	8,936	4,743	53%	9,000	5,315	59%

**Table 7. Blood Lead Testing of Three Old Children by Length of Enrollment
August 2007**

Health Plan Name	Total Enrollment			Continuous Enrollment			
	Eligibles	Eligibles with at least 1 test on or before their 3rd birthday	Percent of Eligibles with at least 1 test on or before their 3rd birthday	Eligibles	Eligibles with at least 1 test on or before their 3rd birthday	Percent of Eligibles with at least 1 test on or before their 3rd birthday	Percentage Point Difference with Continuous Enrollment
Community Choice Michigan	1,750	1,164	67%	954	720	75%	9
Great Lakes Health Plan, Inc.	6,531	4,517	69%	2,790	2,084	75%	6
Health Plan of Michigan, Inc.	6,089	4,312	71%	3,130	2,487	79%	9
HealthPlus Partners, Inc.	2,653	2,014	76%	1,748	1,454	83%	7
M-CAID	754	445	59%	444	309	70%	11
McLaren Health Plan	2,598	1,770	68%	1,528	1,161	76%	8
Midwest Health Plan	2,620	1,920	73%	1,418	1,158	82%	8
Molina Healthcare of Michigan	8,611	5,903	69%	3,208	2,387	74%	6
OmniCare Health Plan	1,882	1,434	76%	1,164	933	80%	4
PHP MM Family Care	697	467	67%	404	294	73%	6
Priority Health Government Progr	2,449	1,932	79%	1,512	1,311	87%	8
Total Health Care	2,048	1,407	69%	1,192	897	75%	7
Upper Peninsula Health Plan	999	734	73%	674	539	80%	6
Managed Care Totals/Percent	39,681	28,019	71%	20,166	15,734	78%	7
Current Performance Monitoring Standard			65%	70%			
FFS (Title XIX only)	9,001	5,316	59%	3,085	1,869	61%	2
FFS (Title V/XIX)	1,042	698	67%	902	618	69%	2
FFS Totals (Title XIX & V/XIX)	10,043	6,014	60%	3,987	2,487	62%	2

Total Enrollment

- Based on MMIS eligibility system
- Enrolled in plan (health plan or FFS) for the measurement month

Continuous Enrollment

- Based on MMIS eligibility system
- Enrolled in same plan (health plan or FFS) for the measurement month and 12 months preceding 3rd birthday, with 1-month allowable gap